



# Thermostatic Water Controller Model 805® High-Low Water Mixer Unit No. 86104



Master water mixing valve shall be of the thermostatic type with liquid-filled thermal motor. It shall have bronze body construction with replaceable corrosion-resistant components. Valve construction shall employ a sliding piston control mechanism. Sliding piston and liner shall be of stainless steel material. Valve shall come equipped with union end stop and check inlets with removable stainless steel strainers. Valve shall control temperature from a low flow of 5 GPM\* up to a maximum flow rate for a given pressure differential. Valve shall provide protection against hot or cold supply line failure and thermostat failure.

Unit to include a shut-off valve and dial thermometer on tempered water outlet. Also included is a valved cold water bypass line from the cold water supply line. All piping passes through the top of cabinet.

Unit is completely assembled and tested with necessary fittings, nipples and escutcheons. See below for cabinet specifications. Cabinet is shipped separately.

**General Purpose – Cabinet Specifications:**

	<b>STAINLESS</b>	<b>CARBON STEEL</b>
Body:	18 Ga.	16 Ga.
Door:	18 Ga.	16 Ga.
Material:	Type 304 with No. 4 Finish	Baked enamel

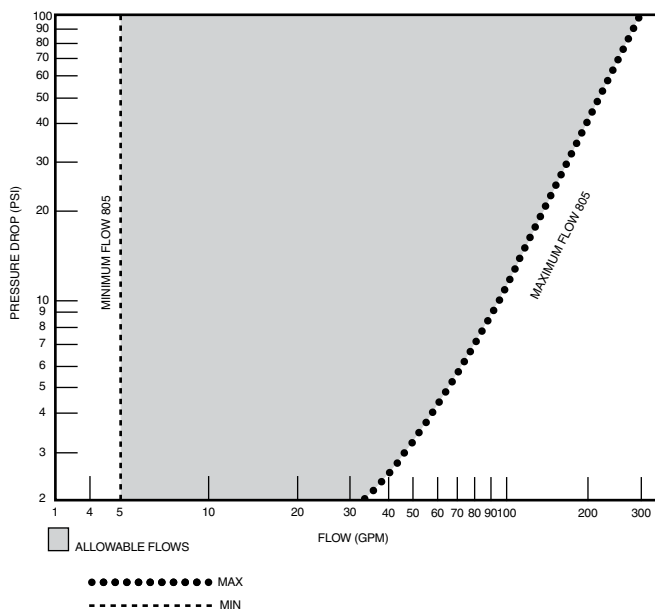
**VALVE FINISH**

- Rough Bronze  Other   
 Chrome

**TYPE OF CABINET**

- Recessed  **MATERIAL** Stainless   
 Semi-Recessed  Carbon Steel   
 Surface  Carbon Steel Box/   
 Stainless Door

Cabinet includes lock with two keys.  
 Hinged left side, piano type.  
 For specifications on security cabinets, contact factory.



**CAPACITIES – MODEL 805**

Pressure Drop PSI	5	10	20	30	45	60	80
<b>Valve Number</b>	<b>Capacity</b>						
<b>805-GPM</b>	64	96	133	165	200	230	265
<b>805-LPM</b>	242	363	503	624	757	870	1003

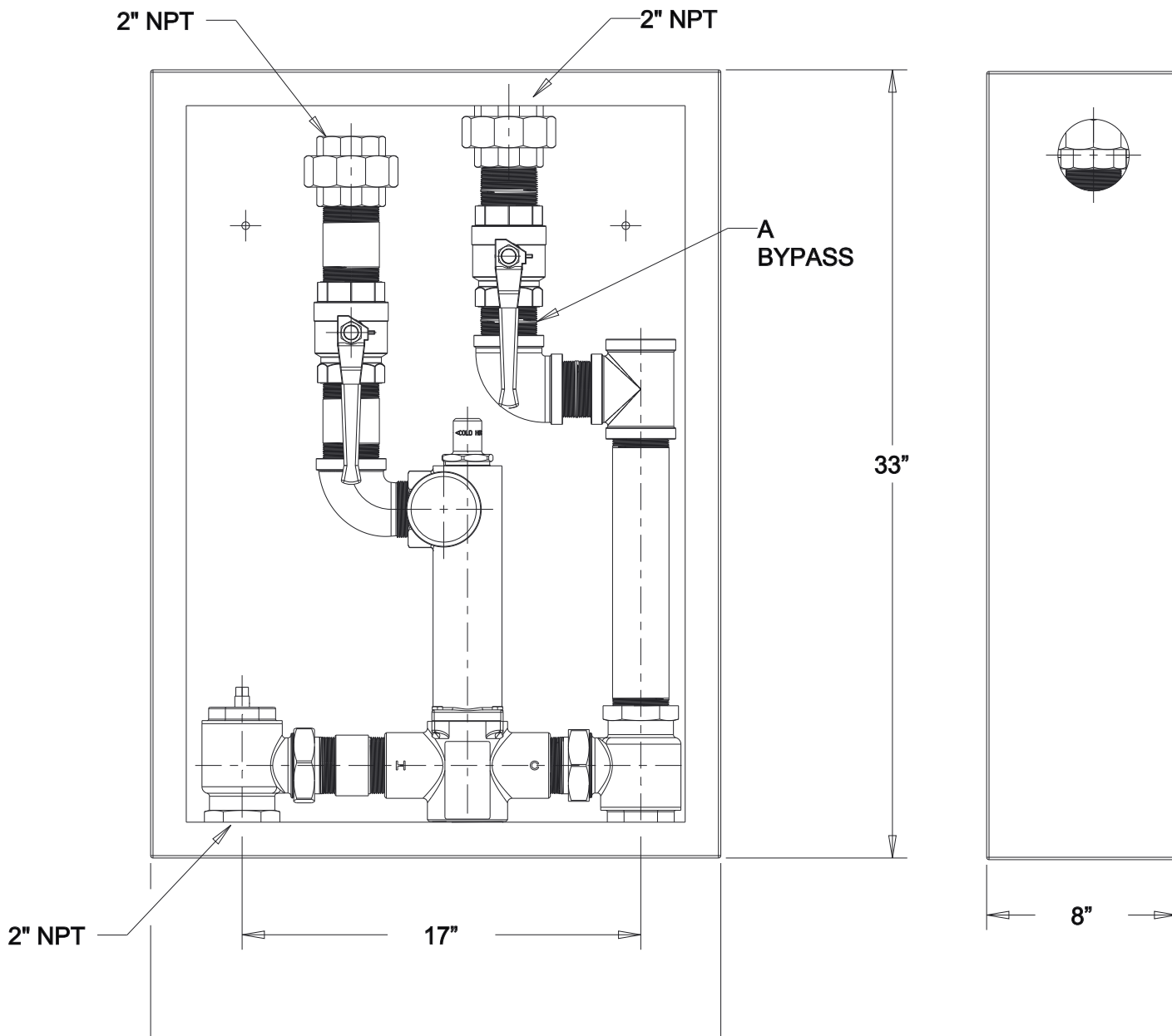
\*1/2 gpm when properly installed in recirculated system.



**MANUFACTURING CO., INC.**

5330 East 25th Street  
 Indianapolis, Indiana 46218  
 Phone (317) 261-1212  
 Fax (317) 261-1208

Design and specification subject to change without notice.  
 Please refer to [www.temperedwater.com](http://www.temperedwater.com) to ensure most current data sheet and other design solutions



**MANUFACTURING CO., INC.**

5330 East 25th Street  
Indianapolis, Indiana 46218  
Phone (317) 261-1212  
Fax (317) 261-1208

Design and specification subject to change without notice.  
Please refer to [www.temperedwater.com](http://www.temperedwater.com) to ensure  
most current data sheet and other design solutions